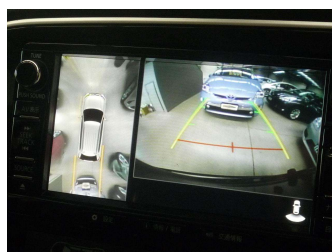
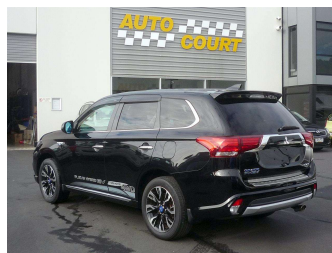


# 2015 Mitsubishi Outlander PHEV G AWD



## Purchase Price

Includes GST, Registration & Licensing

# \$26,000

Finance may be available on this vehicle. Ask one of our friendly staff for more information.



Gain peace of mind with Mechanical Breakdown Insurance. **Ask us how.**



## Top features

- » "Smart Key" Operation
- » 2.0 litre Plug-in Hybr...
- » 360° Around-View Monit...
- » 7 Airbags
- » ABS Braking
- » All Wheel Drive
- » Alloy wheels
- » CD Player
- » Central Locking
- » Centre diff lock
- » Climate Control
- » Cruise Control
- » Electric adj driver's...
- » Electric Mirrors
- » Electric Windows
- » Forward Collision Miti...
- » Heated Front Seats
- » Heated Steering Wheel

## Body Style

**5 door, SUV/4x4**

## Odometer

**23,648 km**

## Engine

**1998 cc, Petrol**

## Fuel Type

**Petrol**

## Transmission

**Automatic, All Wheel Drive**

## Wheels

**18", Alloy**

## VIN

**7AT0CJ3MX23300971**

## Interior

-

## Safety



Based on 2024 UCSR rating for 12-21 models

## Reg No.

**RBC291**

## Ext Colour

**Black**

## History

**Ex-Overseas**

## Seats

**5 seats, Part leather/suede**

## CO2 Emissions

★★★★☆

**43 grams/km**

## Energy Economy

★★★★☆☆

**Annual fuel cost not available  
6.1L per 100km**

Actual figures and cost per year will vary based on proportion of hybrid mode driving and battery charging schedule. Emissions and Energy Economy figures standardised to 3P WLTP.

**Stock ID: 6525**



Auto Court | Phone 03 455 3000 | Email [info@autocourt.net.nz](mailto:info@autocourt.net.nz)  
493 Andersons Bay Road, South Dunedin, DUNEDIN 9012, New Zealand  
[www.autocourt.net.nz](http://www.autocourt.net.nz)