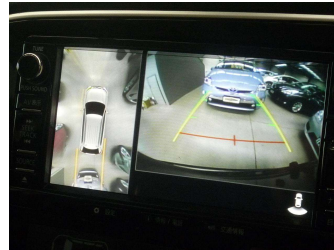
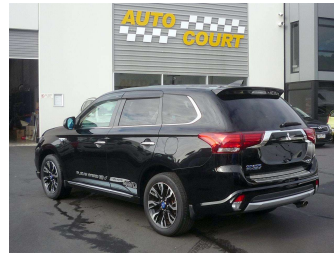


2015 Mitsubishi Outlander PHEV G AWD



Purchase Price

\$28,000

Includes GST, Registration & Licensing

Finance may be available on this vehicle. Ask one of our friendly staff for more information.



Gain peace of mind with Mechanical Breakdown Insurance. **Ask us how.**



Top features

- » "Smart Key" Operation
- » 2.0 litre Plug-in Hybr...
- » 360° Around-View Monit...
- » 7 Airbags
- » ABS Braking
- » All Wheel Drive
- » Alloy wheels
- » CD Player
- » Central Locking
- » Centre diff lock
- » Climate Control
- » Cruise Control
- » Electric adj driver's...
- » Electric Mirrors
- » Electric Windows
- » Forward Collision Miti...
- » Heated Front Seats
- » Heated Steering Wheel

Body Style

5 door, SUV/4x4

Odometer

23,648 km

Engine

1998 cc, Plug-in Electric Hybrid

Fuel Type

Plug-in Hybrid

Transmission

Automatic, All Wheel Drive

Wheels

18", Alloy

VIN

7AT0CJ3MX23300971

Interior

-

Safety



Based on 2024 UCSR rating for 12-21 models

Reg No.

RBC291

Ext Colour

Black

History

Ex-Overseas

Seats

5 seats, Part leather/suede

CO2 Emissions

★★★★☆

43 grams/km

Energy Economy

★★★★☆☆

**Annual fuel cost not available
6.1L per 100km**

Actual figures and cost per year will vary based on proportion of hybrid mode driving and battery charging schedule. Emissions and Energy Economy figures standardised to 3P WLTP.

Stock ID: 6525



Auto Court | Phone 03 455 3000 | Email info@autocourt.net.nz
cnr Burns and Neville Streets, Carisbrook, DUNEDIN 9012, New Zealand
www.autocourt.net.nz